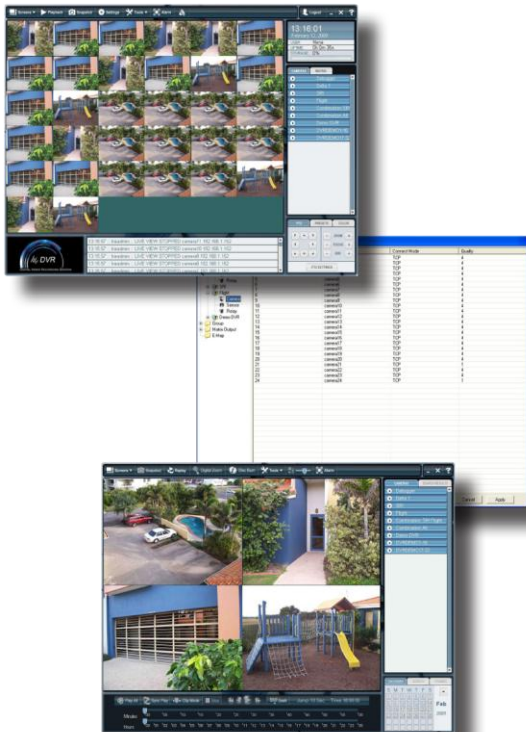




## HIE-DVR™ / HIE-NVR™



		Maximum # of Cameras	
		Analog or IP	
Resolution		Analog	IP
4CIF		32	64
2CIF		64	64
CIF		64	64



### Hardware

- Compatible with any pre-existing or new analog/IP camera infrastructure
- Minimum 30 days of online storage
- Couple with TBYTE® for unlimited video retention
- Capable of utilizing both IP and analog cameras on a single system

### Software

- Cameras configurable to any frame rate and resolution individually or in a group
- Continuous, motion detection, color, alarm, and scheduled recording capabilities
- Full functionality utilizing secure remote clients whether on or off site
- Remote clients can connect to multiple servers and view camera feeds side-by-side

### SmartSearch™ Technology

- Advanced logic-based analysis of recorded images in the archived database
- After-the-fact motion and color detection through unmarked video
- Local and remote preview, search, and play-back viewing capabilities

### Alarm Technology

- Real-time alarms based upon user-defined color and motion areas
- Configurable hue, tone, and shade of color search areas generate accurate results
- Simplified alarm setup
- Real-time color and motion activation matrix with threshold histogram

Features

# Specifications

## Hardware

Physical Dimensions	<b>Width</b> 17in/43cm <b>Height</b> 5.2in/13.2cm (3U) <b>Depth</b> 25.5in/64.8cm <b>Weight</b> ~65lb/30kg
Operating System	Microsoft Windows Server 2003
Processor	Intel Xeon Quad E5405 2.0GHz, 1333FSB 12MB Cache
Memory	4GB DDR2 667MHz ECC RAM
Online Cache	Up to 28TB (RAW)
RAID Controller	Areca ARC-1680-ix
Network Interface	Dual Gigabit Ethernet
Camera Connections	64 input channels
Power	<b>Power Supplies</b> 2+1 redundant and hot-swappable <b>Power Rating</b> 100-240VAC auto-sensing <b>Power Usage</b> 500W typical, 760W max <b>Heat Generation</b> 1365-1706 BTU per hour typical
Operating Environment	<b>Temperature</b> 50-95°F, 10-35°C <b>Humidity</b> 20-80%, non-condensing
Warranty	<b>Standard</b> 1-year hardware

## Software

Frame Rates	<b>Analog:</b> 4CIF - 960 total frames per second; 2CIF - 1920 total frames per second <b>IP:</b> camera specific
Resolutions	<b>Analog:</b> 4CIF, 2CIF, CIF, QCIF <b>IP:</b> camera specific
Alarms	motion, color, motion and color; with configurable areas
Compression Quality	<b>Analog:</b> H.264 <b>IP:</b> camera specific
Playback / Live Viewing	Dual monitor supported
Video Retention	Unlimited offline when coupled with TBYTe®
Video Integrity	Frame by frame time / date stamp for forensic acceptability
Camera Compatibility	All analog IP include the following (* denotes megapixel) (Additional cameras can be tested as needed)  Acti: ACM-1231(*) Arecont: AV3130(*), AV3105(*) Axis: 207, 207mw(*), 213ptz, 214, m3011 Hikvision: DS2CD852F(*), DS-2DM1 Panasonic: WV-NW484S, WV-NF302, WV-NP244, WV-NS954 Sony: SNC-DF40

321 N. Central Expressway, Suite 260  
McKinney, Texas 75070  
Office: 972-542-2327 Fax: 972-542-4900  
www.terastacksolution.com  
www.hie-electronics.com

